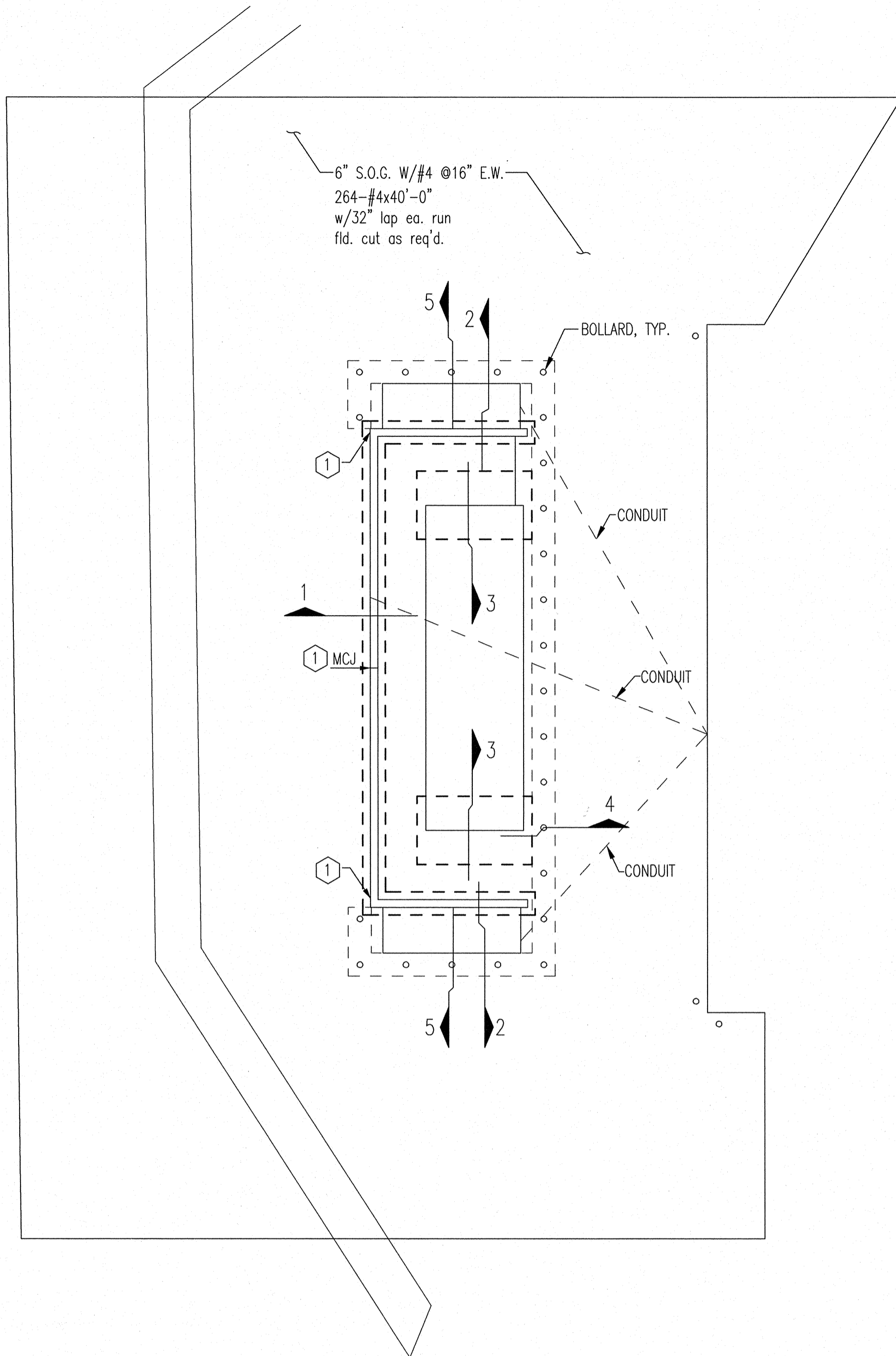
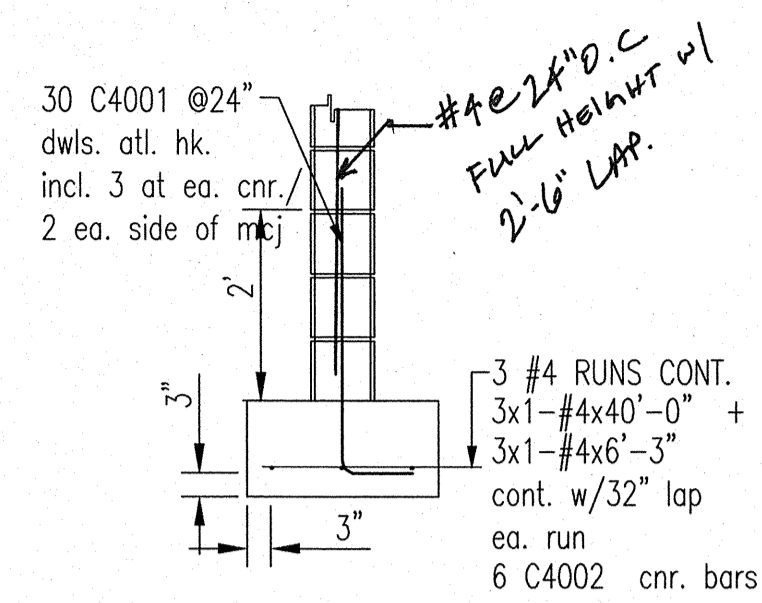
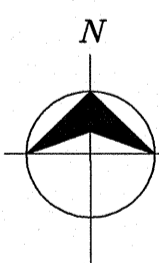


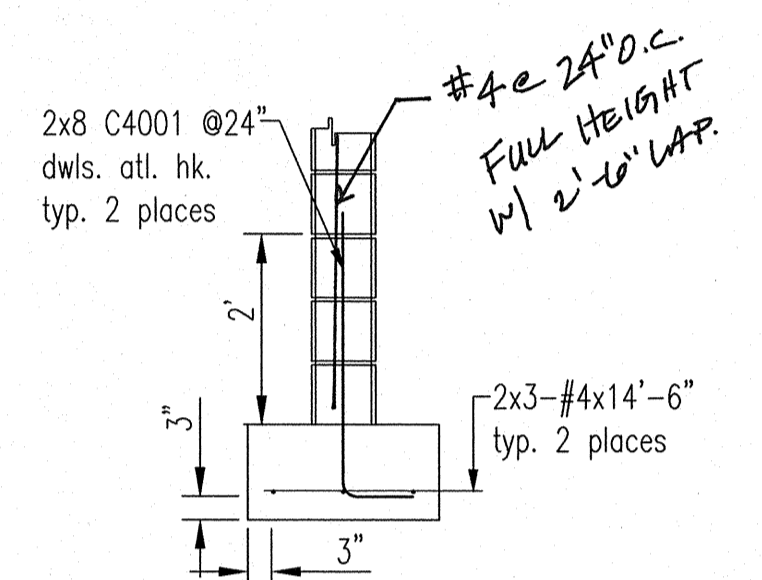
KEY NOTE:
 ① FOR VERTICALS AT MASONRY CTRL. JT. (MCJ) AND CORNER, SEE 8/CR-1



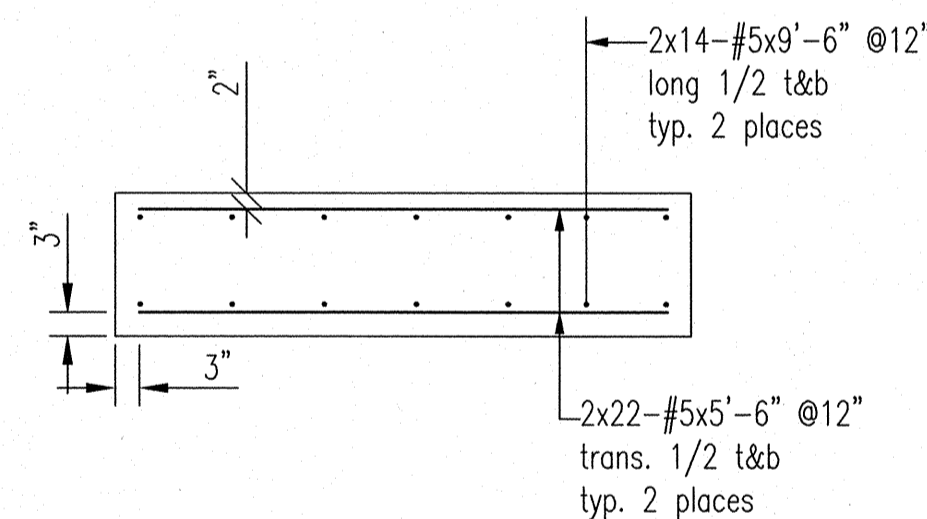
PLAN VIEW



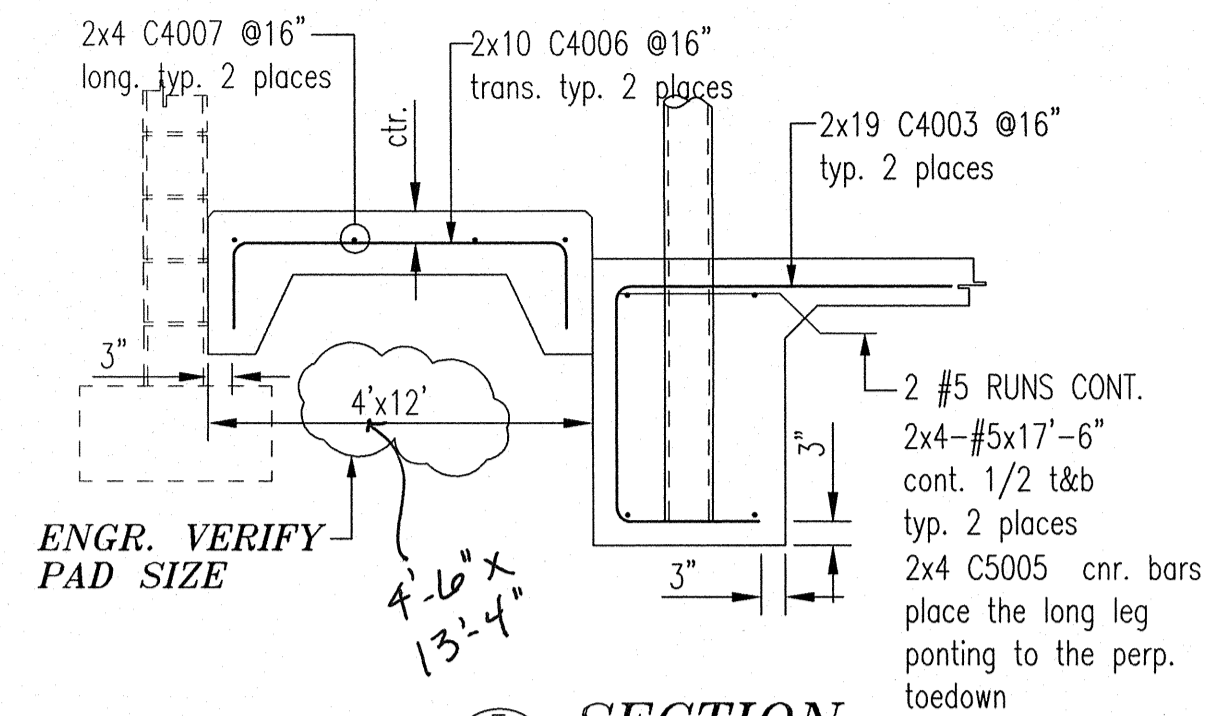
① SECTION
 CR-1 MASONRY WALL FTG.
 SDR: B/SJ501



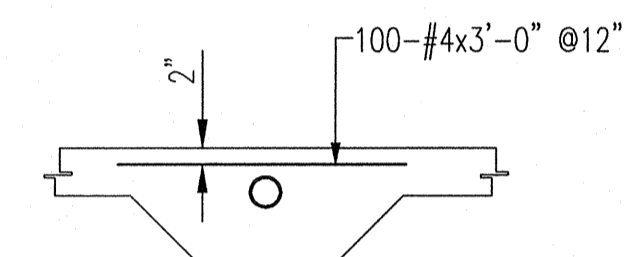
② SECTION
 CR-1 MASONRY WALL FTG.
 SDR: B/SJ501



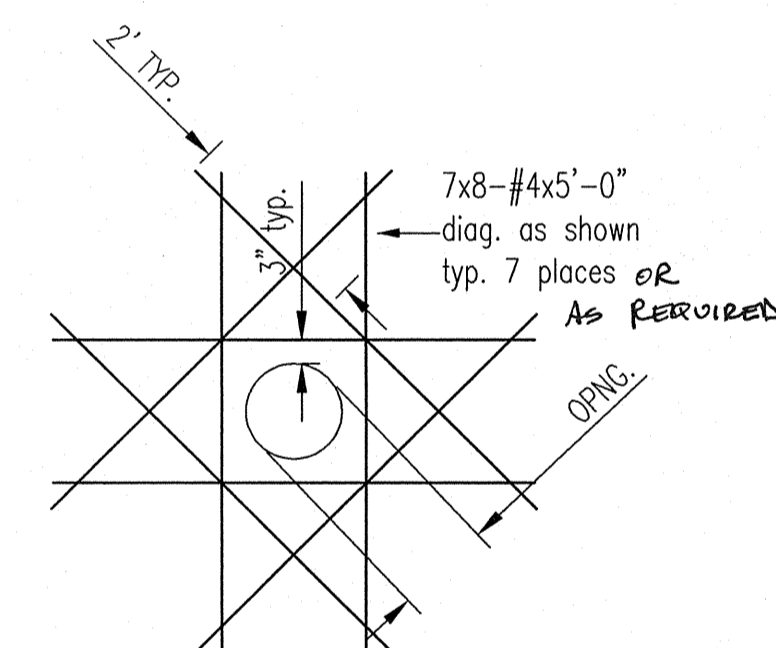
③ SECTION
 CR-1 TANK FTG.
 SDR: A/SJ501



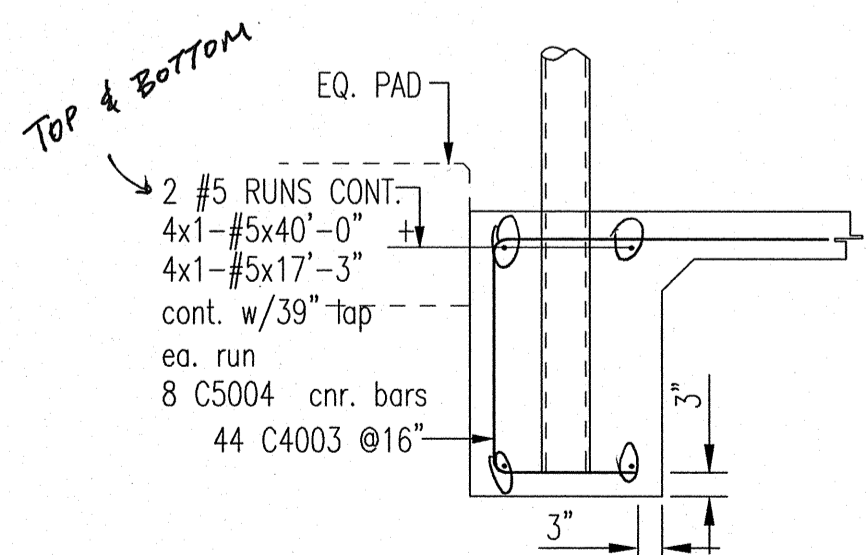
⑤ SECTION
 CR-1 BOLLARD BARRICADE
 SDR: 4/C501, 1/SJ502



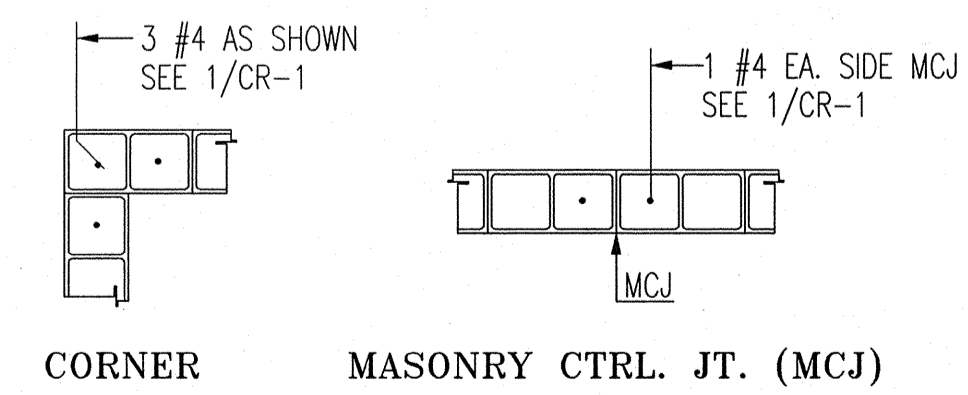
⑥ DETAIL
 CR-1 SLEEVE FOR PIPE/
 CONDUIT
 SDR: 5/SJ501



⑦ DETAIL
 CR-1 ADDED REINF'G. FOR
 OPNG. AT SLAB
 SDR: 4/C501
 5/502



④ SECTION
 CR-1 BOLLARD BARRICADE
 SDR: 5/C501



⑧ DETAIL
 CR-1 CORNER/MCJ
 SDR: 2,3/SJ502

BENDING DETAILS. FOR RUN: 001 - conc. reinf'g.

Bar Mark	Qty	Size	Total length	Type	'A'	'B'	'C'	'D'	'E'	'F'	'G'	'H'	'J'	'K'	'O'	'R'
C4001	46	#4	3'9"	17		9"	3"									
C4002	6	#4	5'4"	17		2'8"	2'8"									
C4003	82	#4	7'6"	17		3'6"	2'6"	1'6"								
C4006	20	#4	5'4"	17		11"	3'6"	11"								
C4007	8	#4	5'5"	17		11 1/2"	3'6"	11 1/2"								
C5004	8	#5	6'6"	17		3'3"	3'3"									
C5005	8	#5	8'9"	17		3'3"	5'6"									

ALL DIMENSIONS ARE OUT TO OUT
 ALL STEEL A615 Grade 60
 FOR TYPICAL BAR BENDS REFER TO
 CRSI MANUAL OF STANDARD PRACTICE

REVIEWED
 CORRECT AS NOTED
 REVISE AND RESUBMIT
 REJECTED

2051 W. Sunset Road
 Suite 101
 Tucson AZ 85704
 Tel: 520-293-1488
 Fax: 520-293-8349

REVIEW IS FOR CONFORMANCE WITH THE DESIGN CONCEPT OF THE PROJECT. CONTRACTOR IS RESPONSIBLE FOR COMPLIANCE WITH THE INFORMATION GIVEN IN THE CONTRACT DOCUMENTS. DIMENSIONS TO BE CONFIRMED AND CORRELATED AT THE JOB SITE FOR INFORMATION THAT PERTAINS SOLELY TO THE FABRICATION PROCESSES AND/OR TECHNIQUES OF CONSTRUCTION FOR COORDINATION OF THE WORK OF ALL TRADES AND THE SATISFACTORY PERFORMANCE OF THIS WORK.

BY: *Wesley Beck* DATE: *4/26/11*

No.	Description	Date	By	
Revisions and Issue Record				
The full intent and purpose of this drawing is the placing of reinforcing steel bars ONLY. It is NOT to be used as a means of communication between the Architect, Engineer, Contractor or any other Sub-trades.				
THIS DRAWING IS NOT TO BE SCALED.				
Consolidated Rebar, Inc. A HARRIS REBAR COMPANY				
4361 E. TENNESSEE ST TUCSON, ARIZONA 85714 TEL: (520) 295-8889 FAX: (520) 744-8550				
Project: Richey Blvd. Fuel Station 150 W. Congress, Tucson Az.				
Drawing: Plan view/Sections/Detail/Barlist				
Contractor: Ron's Concrete				
Customer:				
Refer to Run No:				
Date	Drawn	Chkd.	Contract No.	Dwg. No.
05/16/11	MTP		11613143	CR-1